

DEF Guard Series Tanks™



Clawson Tank Company introduces its stainless steel aboveground tanks designed specifically for DEF fluid that ensure the quality of Urea/DEF. This innovative system provides a pure environment to prevent contamination and compromise from exposure to the tank itself. Our DEF Guard Series Tanks™ exceed requirements of both ISO 22241 and the PEI Recommended Practice for storing Urea DEF. Not just for the short term, but for decades.



Serving the petroleum industry since 1946.

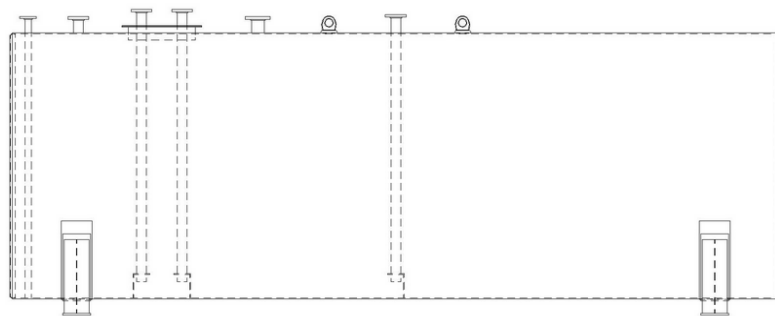
4545 Clawson Tank Drive
Clarkston, MI 48346

P: (248) 625-8700

F: (248) 625-3066

www.clawsontank.com

DEF Guard Series Tanks™



DEF GUARD SERIES ADVANTAGE

- The 304 SS tank can not react and contaminate product as a result of chemical reaction, permeation or lining degradation, unlike plastic and lined tanks.
- Highest strength rating for any tank in its class. Much higher than plastic tanks which are intended for short term use.
- Factory installed “DEF Quality Integrity System” which allows sampling of contents without interruption of systems operation.
- Factory installed combination “Precision Tank Testing Assembly” with an “Electronic Leak Detection Assembly” which can interface with automatic tank gauge (ATG) systems.
- Only tank system inert to DEF over the numerous decades design lifespan of the tank.

DEF Guard Standard Features

- Dual wall stainless steel chemical tanks manufactured to UL142, STI performance standards.
- Chemically cleaned in an acid wash and passivated to insure purity.
- 24” diameter SS access manhole including EPDM DEF compatible gasket.
- Remote fill spill containment box.
- Closed loop design system, including dry-brake fill connection and SS pressure vacuum working vent.
- Adequate SS threaded openings or optional flanged fittings.
- DEF Quality Integrity System, Precision Tank Testing Assembly and Electronic Leak Detection Assembly.

Optional Features

- Chemical grade DEF certified pump assemblies.
- SS hi-level alarm probe with alarm panel.
- Electronic digital gauge system with programmable digital display and high & low level alarms.
- Available in either single or double wall design and in cylindrical or rectangular configurations.
- Available with or without heaters and insulation.



4545 Clawson Tank Drive
Clarkston, MI 48346

P: (248) 625-8700 F: (248) 625-3066

www.clawsontank.com